



Alderwood Drive, Romford, RM4

BUTLER & STAG



Guide Price £450,000 - £475,000. Offering a prime position in the heart of Abridge is a fantastic opportunity to apply your own stamp on this three bedroom mid-terraced house which offers huge scope for redesigning or extending, subject to the usual planning consents.



Freehold

- Three Bedroom Mid-Terraced House
- Kitchen/Diner
- Off-Street Parking
- Separate Reception Room
- First Floor Bathroom
- Chain Free

Internally the ground floor accommodation comprises of a separate living room away from the spacious kitchen/diner which allows direct access to the south/east facing rear garden.

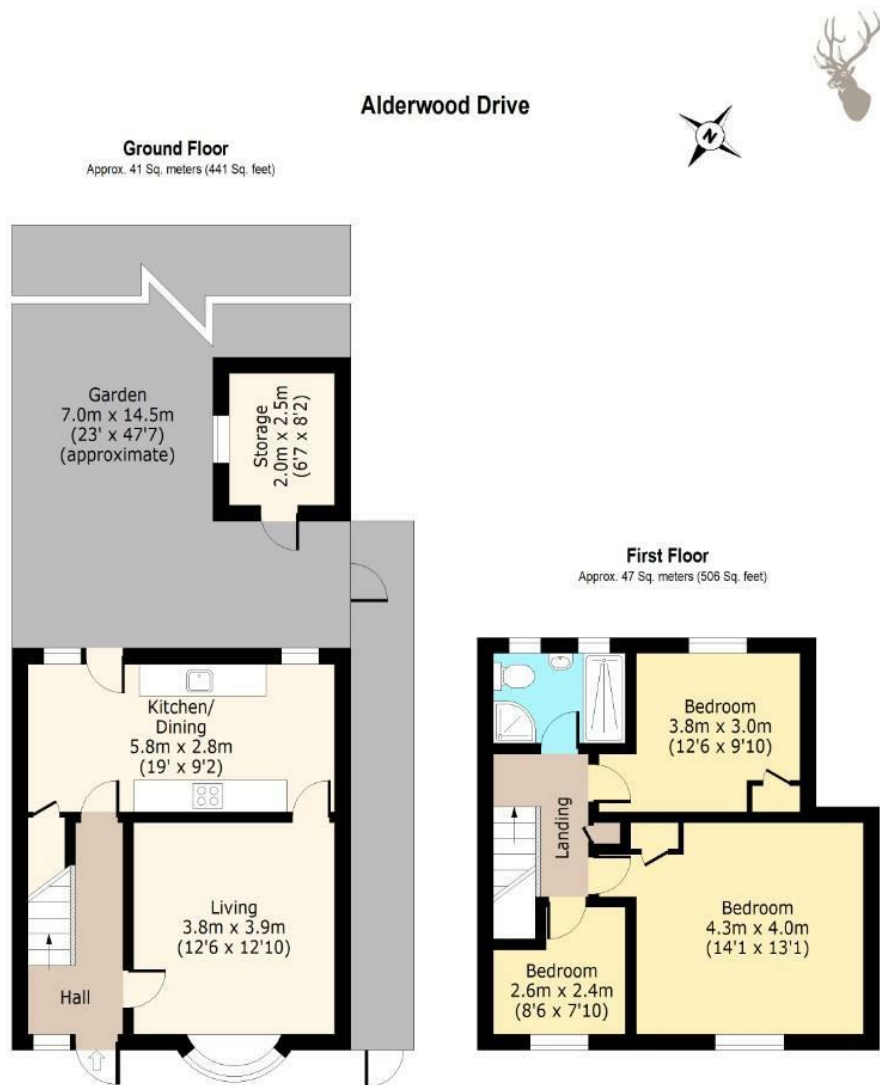
To the first floor there are three good sized bedrooms and a family bathroom.

Externally, the property offers off-street parking for two cars via the driveway, side access to a well presented garden with stunning views over the farming fields which extends into the distance.

Abridge is a popular village in the Essex countryside conveniently situated to nearby tube stations at Theydon Bois and Debden. The village has a nice pub, a deli, a Post Office and a primary school; Loughton is just a few minutes' drive and you can either hop on the train or jump in the car and be in London in next to no time. Everything is so convenient and yet when you are looking across the fields you feel a million miles from anywhere.







Total area: approx. 88 Sq. meters (947 Sq. feet)
For illustration purposes only - not to scale
www.ipapius.com

IMPORTANT NOTICE - These particulars have been prepared in good faith and they are not intended to constitute part of an offer or contract. We have not performed a structural survey on this property and the services, appliances and specific fittings have not been tested. All photographs, measurements, floor plans and distances referred to are given as a guide and should not be relied upon.

BUTLER & STAG

☎ 01992 667666

🏠 4 Forest Drive, Theydon Bois, Essex, CM16 7EY

✉ theydon@butlerandstag.com

www.butlerandstag.uk